



Self Assessment

It is a fundamental part of the self assessment system that responsibility lies with you, the taxpayer, to file Returns and pay the right amount of tax, at the right time – you must not wait for HMRC to ask.

Tax Returns

For most people, HMRC will issue a notice to file a Tax Return covering income for the year ending 5 April 2022 on or after 6 April 2022.

The completed Return has to be submitted to HMRC by the 'filing date' (31 October 2022 for paper Returns, 31 January 2023 for Returns filed online).

You should note that figures must be given for every item, even if these are only estimates. It is not possible to enter question marks or leave HMRC to decide whether an item is taxable or not. The only section that can be left for HMRC to complete is the actual calculation of the tax due on your total income.

If you have taxable income or capital gains for 2021/22 and have not received a notice to file a Tax Return, you must advise your tax office by 5 October 2022 at the latest.

There are automatic penalties for late filing of Tax Returns. Failure to file the Tax Return by the filing date incurs a £100 penalty. If it has still not been returned three months later, daily penalties of £10 will accrue, running for a maximum of 90 days. There will be further penalties of 5% of tax due for the return period (or £300 if greater) for prolonged failures, which arise after six months and again after 12 months.

We can prepare your Tax Return for you, file it with HMRC and advise on the appropriate payments to make.

Simple Assessment

HMRC has introduced a system of Simple Assessment. The process allows HMRC to assess the tax liability for certain taxpayers, without the need for them to complete a self assessment Tax Return.

HMRC will instead use the data it already holds in the personal tax accounts to calculate the tax owed. Simple Assessment currently only applies to a small group of taxpayers.

Returns and payment

Amendments, enquiries and record keeping

You have one year from the filing date to make any amendments to the Return. HMRC may correct obvious errors or mistakes within nine months of receipt of the Return.

Within a period of one year from the date the Tax Return is submitted, HMRC will have a right to make enquiries to check that the Tax Return has been completed correctly. No reason for the enquiry needs to be given.

All records relating to the Return should be kept for a period of one year from the filing deadline. If trading or rental income is involved, all records should be kept for a further four years.

Determinations

If a Return is not submitted by the due date, HMRC can, within three years of the filing date, make a determination to the best of its information and belief of the amount of tax due.

This amount of tax will be payable without appeal, but may be automatically superseded when the self assessment Return is sent in.

Payment of tax

Payments on account of income tax and class 4 NICs (where due) for a particular tax year may be due on 31 January in the tax year and 31 July following the end of the tax year.

These payments are each 50% of the income tax (and class 4 NIC) liability for the previous tax year less any amounts deducted at source for that year. A balancing payment may be due if the tax payable for the current

year exceeds the payments on accounts made; this is due on 31 January following the end of the tax year.

Payments on account are not due where the amount payable is less than £1,000 or if more than 80% of the total tax liability is met by income tax deducted at source. In these cases, the balance of tax due for the year, including capital gains tax, is payable on 31 January following the end of the tax year.

You have the right to reduce payments on account if you believe the income tax for the current year will be lower than that for the previous year. However, you may be charged interest if the reduction is more than it should be.



Other issues

Late payment penalties and interest

An automatic late payment penalty of 5% will be levied on any 2021/22 tax outstanding more than 30 days after 31 January 2023, and further penalties of 5% will apply to any 2021/22 tax still outstanding at 31 July 2023 and 31 January 2024. There is a right of appeal against the penalties on the grounds of reasonable excuse.

In addition, interest will arise on tax (and penalties) paid late, from the due date of payment to the actual date of payment. HMRC will pay interest on amounts overpaid, from the date of payment (or the due date if later) to the date of repayment.

Self assessment for employees

For employees, self assessment is comparatively straightforward. The PAYE system means employees with one job should pay the correct amount of tax at source. An employee with a relatively straightforward tax situation is unlikely to be asked to complete a Tax Return.



Tax codes

The main cause of under- or overpayments of PAYE is actual benefits-in-kind being different from the estimates included in the tax code. If there is an underpayment of less than £3,000 for 2021/22, HMRC will try to adjust the 2022/23 or 2023/24 PAYE code to collect the underpayment. Self assessment allows taxpayers who have a PAYE code to carry forward underpayments in the same way, provided the Return is filed by 30 December 2022. The taxpayer has the option of paying the outstanding tax by the normal payment date of 31 January 2023.

Simpler tax for small businesses

An optional cash basis is available for the purposes of calculating taxable income for small unincorporated businesses. The system works on a cash flow basis. For income, it is what the business receives, when it is received; for outgoings, it is what the business pays, when it pays it. Receipts include all amounts received in connection with the business. Allowable payments are expenses paid wholly and exclusively for the purposes of the trade. All unincorporated businesses may choose to use flat rate expenses for particular items of business expenditure – the use of vehicles, the use of home and an adjustment for private use of business premises.

Key dates

Please note that the following dates relate to actions to be taken during the 2022/23 tax year.

6 April 2022

A notice to complete a Return for 2021/22 is issued.

31 July 2022

Second payment on account of 2021/22 income tax and Class 4 NIC liability.

31 October 2022

Paper Tax Return for 2021/22 to be submitted.

30 December 2022

Tax Return for 2021/22 to be filed online if you want a tax underpayment of less than £3,000 collected via your 2023/24 PAYE code.

31 January 2023

Online Tax Return for 2021/22 to be submitted with self assessment payment of balance of income tax and Class 4 NICs for 2021/22 and payment of capital gains tax for 2021/22.

First payment on account of 2022/23 income tax and Class 4 NICs (normally half the total 2021/22 income tax and Class 4 NIC liability, adjusted for tax deducted at source).

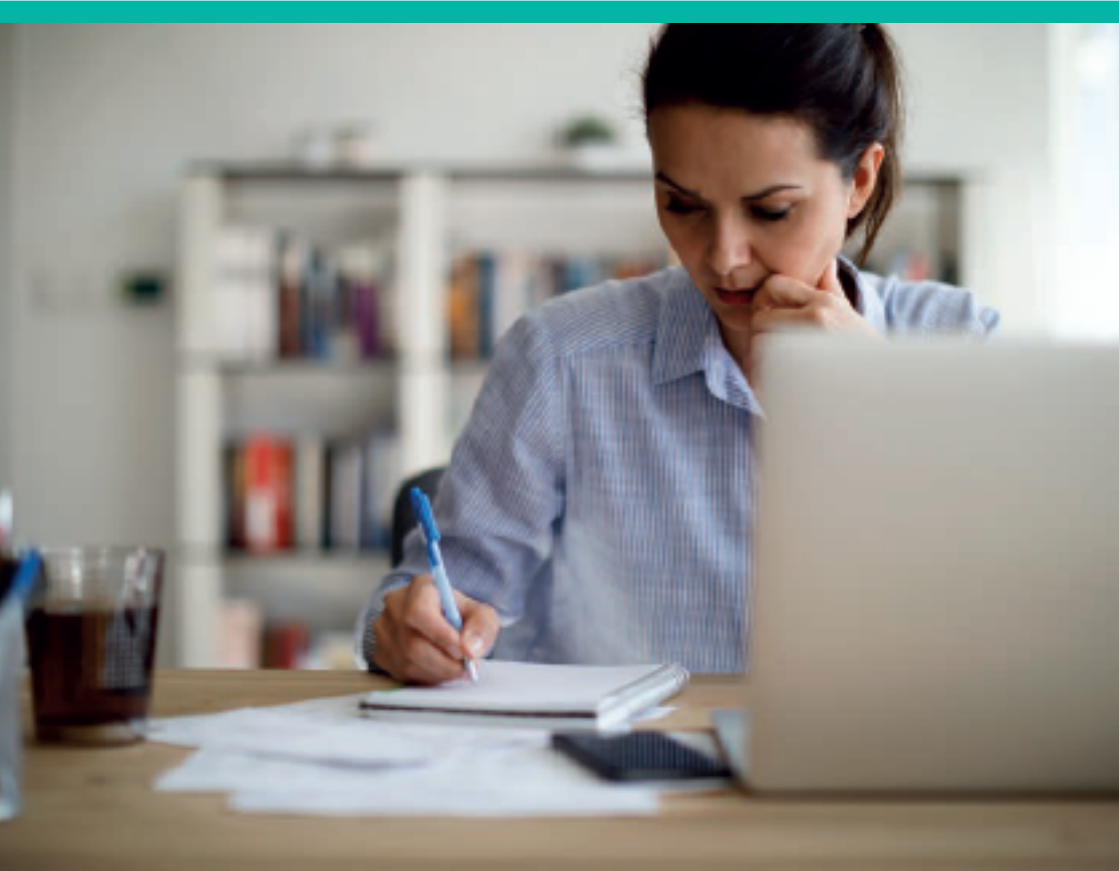
Information deadlines

So that employees can complete their Tax Returns, information deadlines are imposed on employers:

- Form P60 must be provided to employees by 31 May following the end of the tax year

- Copies of form P11D must be provided to relevant employees by 6 July following the end of the tax year
- Form P45 has a part for the employee to retain.

For more information on how we can assist you, please contact us.



cottons group

Northampton

1 Billing Road, Northampton NN1 5AL
☎ 01604 632 116

Rugby

Chestnut Field House, Chestnut Field,
Rugby CV21 2PD
☎ 01788 579 033

Daventry

The Stables, Church Walk, Daventry NN11 4BL
☎ 01327 879 090

London

Lower Ground Floor, Office 231
Shoreditch, High Street, London E1 6PJ
☎ 020 3906 6444

Milton Keynes

The Pinnacle, Midsummer Boulevard,
Milton Keynes MK9 1BP
☎ 01908 414 136

enquiries@cottonsgroup.com
www.cottonsgroup.com